

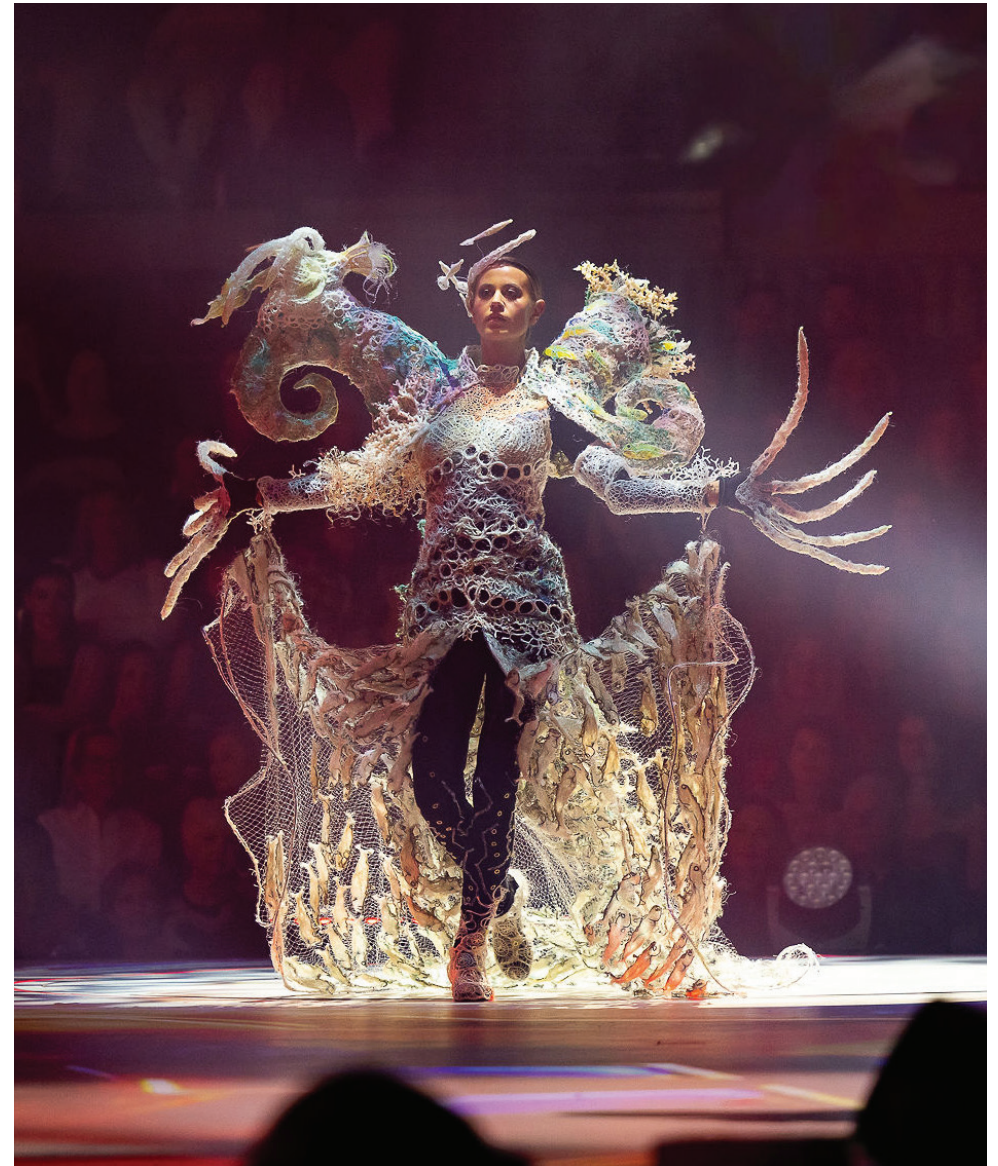


Lynnette Griffiths and Marion Gaemers would like to thank the WOW team for their amazing support in New Zealand - Their model in New Zealand for bringing the costume to life and their Australian model Val Scier for endless hours of fittings - Photographer in Australia Keiran James of Rockpool Productions - and all those who helped with advice and support.

All on stage photography provided by
WOW



GHOST NET COLLECTIVE
PO Box 7 Machans Beach QLD
Australia 4878
Ph +61 4 2904 8782
e: ghostnetcollective@gmail.com



WINNERS - International Designer - Australia and the Pacific

Lynnette Griffiths & Marion Gaemers



WOW
 WORLD OF WEARABLEART
 AWARDS SHOW

CATEGORY WINNERS 2023
 International Designer –
 Australia and the Pacific

MARS AND BEYOND

Birth of the Babel Fish

Artists
 Lynnette Griffiths
 Marion Gaemers

GARMENT STORY

It is hard to think of a more fitting symbol for the environmental crisis than a Ghost Net. Much like global warming and pollution, they exist as colossal, relatively slow-moving menaces in the abyss. Because they are literally beneath the surface they also exist, much like the issue, almost as an abstraction. Until, of course, they are not just an abstraction. Birth of the Babel Fish counters the abstractness of this issue, placing it in a human context as a wearable garment.

Creating evolutionary tales from marine debris; (ghost net) is what Griffiths and Gaemers do as they sit together stitching, collaboratively sharing deep respect for the makers circle and recycling.

They create textural handstitched fabric by deconstructing and stitching together decarded net and rope. This project allowed them to explore the fluorescent nature of fishing gear as they probed the curious with their passion for the handmade. The metamorphosis of material to object is inspiring and appealing to both; Gaemers who is a sci-fi enthusiast and to Griffiths sense of surreal fantasy and costume.

Imagine a mega-tsunami sucking all the Earths plastic and creating an ocean on Mars that disappears beneath the surface... The different habitats and creatures metamorphosise from the waste, emerging from the strata of the landscape, that is the garment. The fluorescent babel fish swim free, as Douglas Adams intended in the 1970's seminal work Hitch Hikers Guide to the Galaxy. Emerging from the sunken oceans of Mars, luminous, regenerated, hand-stitched life enfolds a Queen as she births strange slug like fluorescent babies and propels them onward into deep space on a mission to interpret interplanetary languages that allows galactic travellers and hitchhikers to communicate freely.

